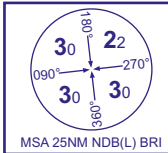


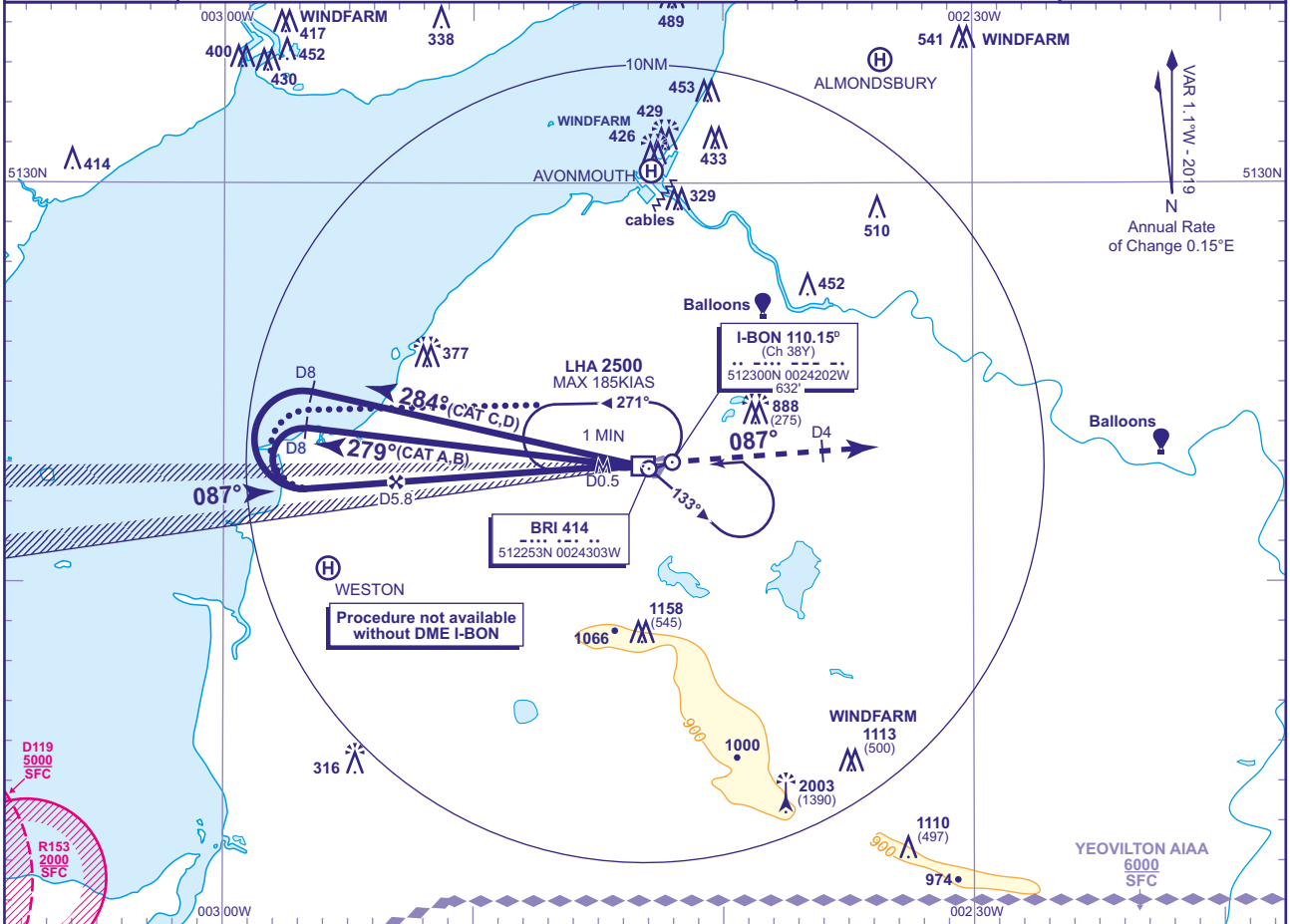
**INSTRUMENT APPROACH CHART - ICAO**

**BRISTOL  
LOC/DME/NDB(L)  
RWY 09**  
(ACFT CAT A,B,C,D)



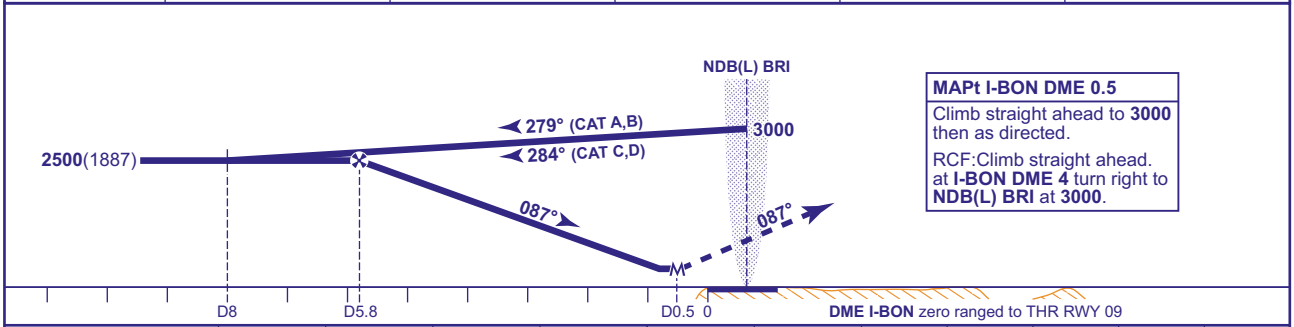
TWR	133.850	BRISTOL TOWER	AD ELEVATION	622
APP	125.650	BRISTOL RADAR	THR ELEVATION	613
RAD	136.080	BRISTOL DIRECTOR	OBSTACLE ELEVATION	2003 AMSL (1390) (ABOVE THR)
ATIS	126.030	BRISTOL INFORMATION	BEARINGS ARE MAGNETIC	

TRANSITION ALTITUDE  
**6000**



**RECOMMENDED PROFILE** Gradient 5.2%, 320FT/NM

<b>DME I-BON</b>	5	4	3	2	1
<b>ALT(HGT)</b>	2260(1647)	1940(1327)	1620(1007)	1310(697)	990(377)



**MAPt I-BON DME 0.5**  
Climb straight ahead to **3000** then as directed.  
RCF: Climb straight ahead. at I-BON DME 4 turn right to NDB(L) BRI at 3000.

Aircraft Category	Procedure	A	B	C	D	Rate of descent	G/S KT				
		900(287)	900(287)	900(287)	900(287)		160	140	120	100	80
<b>OCA (OCH)</b>		900(287)	900(287)	900(287)	900(287)		850	740	640	530	420
<b>VM(C)OCA (OCH AAL)</b>		1050(428)	1190(568)	1460(838)	1560(938)						
	<b>North of RWY 09/27</b>	1050(428)	1190(568)	1290(668)	1320(698)						

**ALTERNATIVE PROCEDURE EXTENDED HOLDING PATTERN**  
Overhead NDB(L) BRI at 3000 in holding pattern, turn left and descend on the extended outbound leg to 2500. At I-BON DME 8 turn left to intercept LOC inbound. Then continue as for basic procedure.

**NOTES**  
1 Lowest altitude to commence procedure from hold is 2500.  
2 Maximum KIAS for procedure is 110KIAS (CAT A); 140KIAS (CAT B); 185KIAS (CAT C,D).

**CHANGE (3/19): BRISTOL FILTON HELI REMOVED. ALMONDSBURY HELI ADDED.**