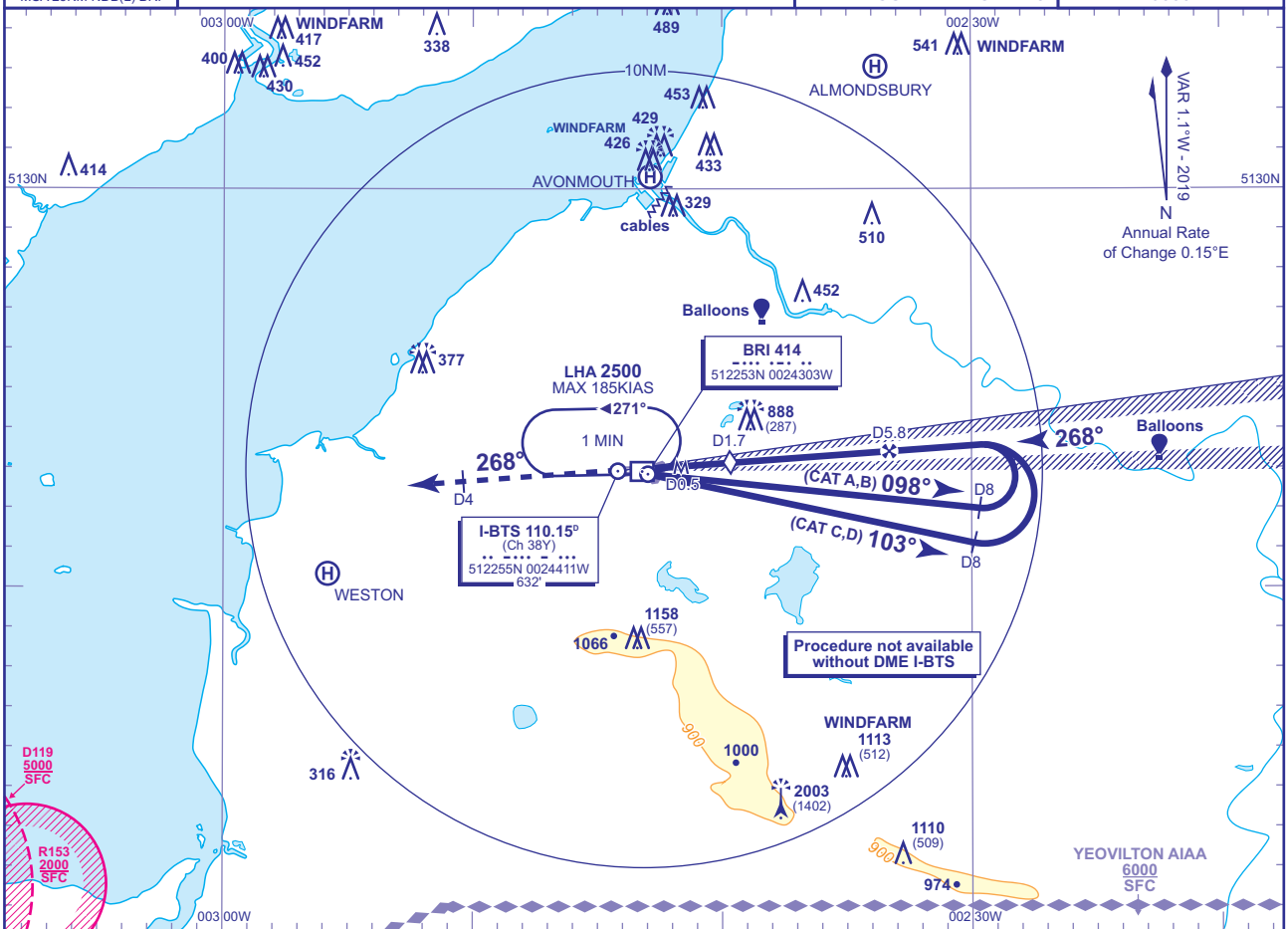


INSTRUMENT APPROACH CHART - ICAO

**BRISTOL
LOC/DME/NDB(L)
RWY 27
(ACFT CAT A,B,C,D)**

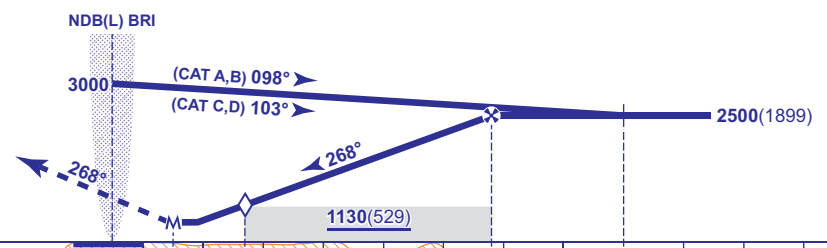
<p>MSA 25NM NDB(L) BRI</p>	TWR 133.850	BRISTOL TOWER	AD ELEVATION 622
	APP 125.650	BRISTOL RADAR	THR ELEVATION 601
	RAD 136.080	BRISTOL DIRECTOR	OBSTACLE ELEVATION 2003 AMSL (1402) (ABOVE THR)
	ATIS 126.030	BRISTOL INFORMATION	BEARINGS ARE MAGNETIC
			TRANSITION ALTITUDE 6000



RECOMMENDED PROFILE Gradient 5.2%, 320FT/NM

DME I-BTS	5	4	3	2	1
ALT(HGT)	2240(1639)	1920(1319)	1610(1009)	1290(689)	970(369)

MAPt I-BTS DME 0.5
Climb straight ahead to 3000 then as directed.
RCF: Climb straight ahead. at I-BTS DME 4 turn right to NDB(L) BRI at 3000.



DME I-BTS zero ranged to THR RWY 27										
Aircraft Category	A	B	C	D	Rate of descent G/S KT FT/MIN	160	140	120	100	80
OCA (OCH) Procedure	910(309)	910(309)	910(309)	910(309)		850	740	640	530	430
VM(C)OCA (OCH AAL)	Total Area	1050(428)	1190(568)	1460(838)	1560(938)					
	North of RWY 09/27	1050(428)	1190(568)	1290(668)	1320(698)					

NOTES
1 Lowest altitude to commence procedure from hold is 2500.
2 Maximum KIAS for procedure is 110KIAS (CAT A); 140KIAS (CAT B); 185KIAS (CAT C,D).

CHANGE (3/19): BRISTOL FILTON HELI REMOVED. ALMONDSBURY HELI ADDED.