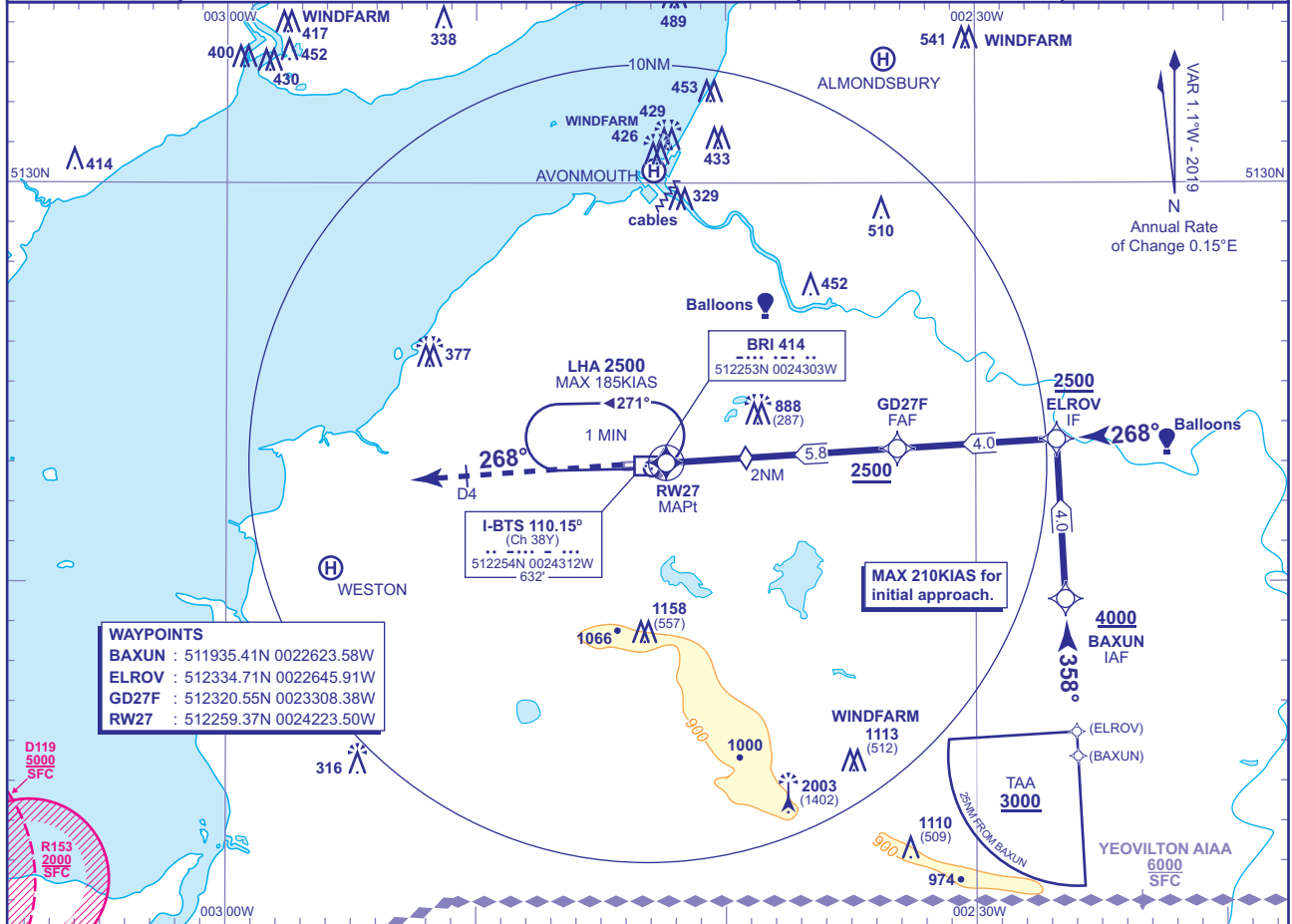


INSTRUMENT APPROACH CHART - ICAO

**BRISTOL**  
**RNAV (GNSS)**  
**RWY 27**  
(ACFT CAT A,B,C,D)

<p>MSA 25NM ARP</p>	TWR 133.850	BRISTOL TOWER	AD ELEVATION 622	<p>EGNOS CH 46169 E27A</p> <p>MIN TEMP -10°C</p> <p>TRANSITION ALTITUDE 6000</p>
	APP 125.650	BRISTOL RADAR	THR ELEVATION 601	
	RAD 136.080	BRISTOL DIRECTOR	OBSTACLE ELEVATION 2003 AMSL (1402) (ABOVE THR)	
	ATIS 126.030	BRISTOL INFORMATION	BEARINGS ARE MAGNETIC	

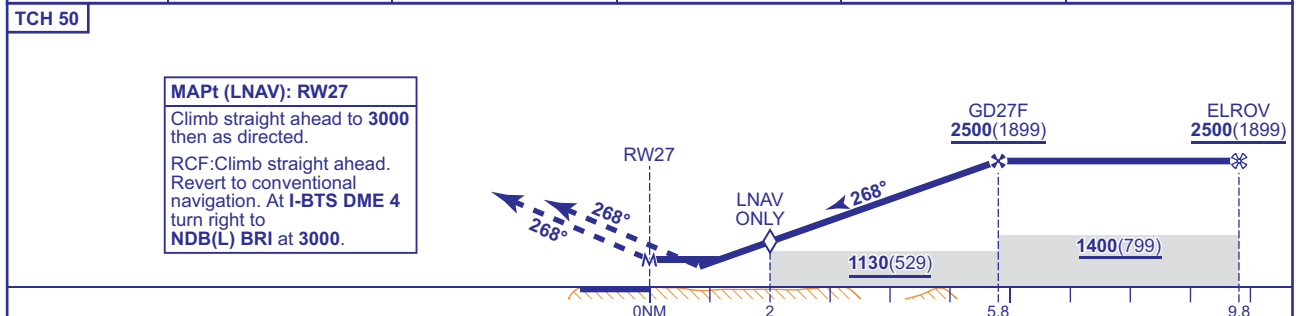


**WAYPOINTS**

BAXUN	: 511935.41N 0022623.58W
ELROV	: 512334.71N 0022645.91W
GD27F	: 512320.55N 0023308.38W
RW27	: 512259.37N 0024223.50W

**RECOMMENDED PROFILE VNAV - VERTICAL PATH ANGLE 3.0°, 318FT/NM, LNAV - Gradient 5.24%, 318FT/NM**

NM to RW27	5	4	3	2 (LNAV SDF)	1
ALT(HGT)	2250(1649)	1930(1329)	1610(1009)	1290(689)	970(369)



Aircraft Category		A	B	C	D	Rate of descent	G/S KT				
		FT/MIN	160	140	120		100	80			
OCA (OCH)	LPV	851(250)	851(250)	851(250)	852(251)		850	740	640	530	420
	LNAV/VNAV	950(349)	950(349)	950(349)	950(349)						
	LNAV	1000(399)	1000(399)	1000(399)	1000(399)						
VM(C)OCA (OCH AAL)	Total Area	1050(428)	1190(568)	1460(838)	1560(938)						
	North of RWY 09/27	1050(428)	1190(568)	1290(668)	1320(698)						

**NOTES** 1 Pilots should 'Request RNAV Approach' on first contact with Bristol Radar.

**CHANGE (3/19):** BRISTOL FILTON HELI REMOVED. ALMONDSBURY HELI ADDED.  
AERO INFO DATE 26 NOV 18