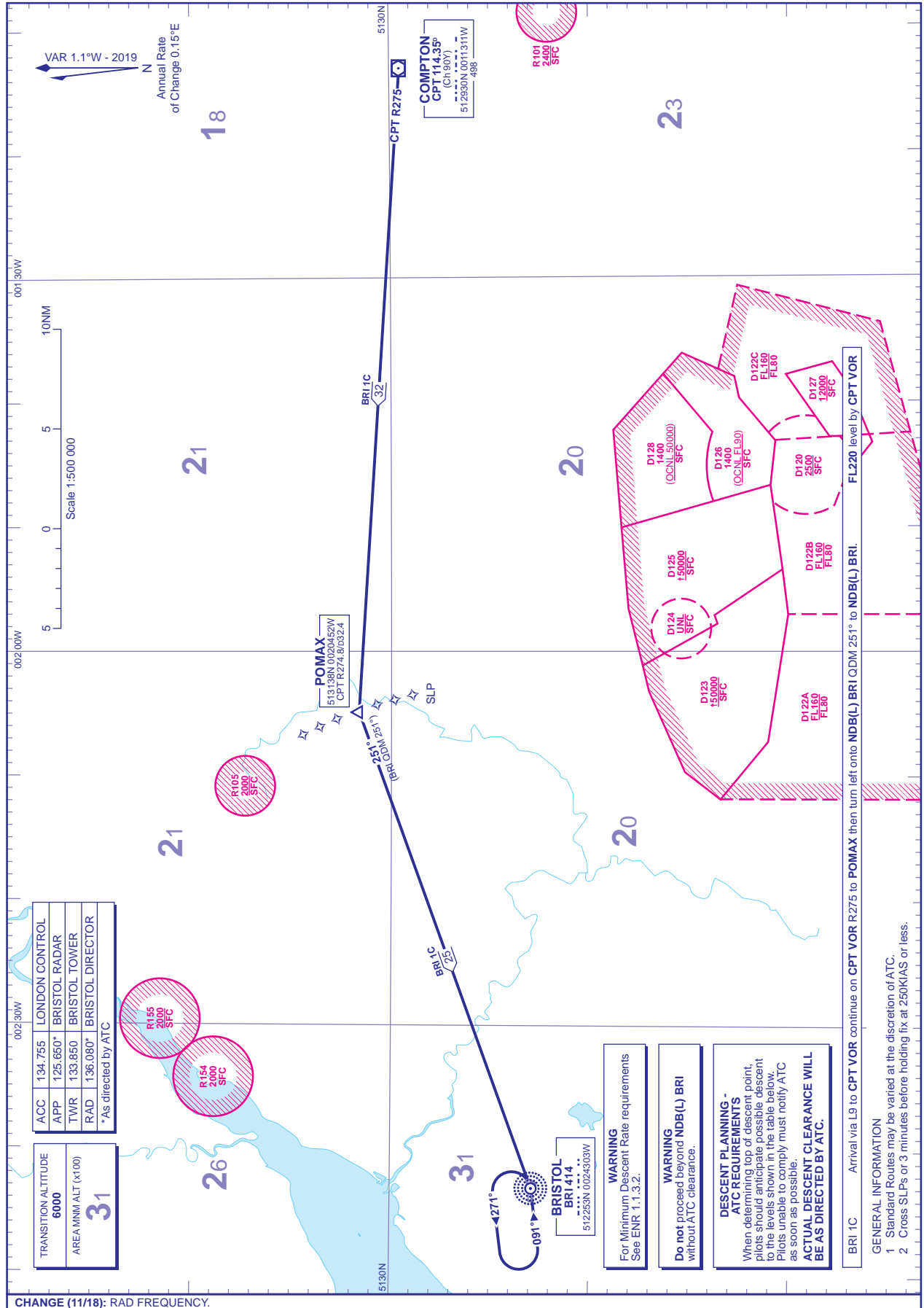


STANDARD ARRIVAL CHART -  
INSTRUMENT (STAR) - ICAO

DISTANCES IN NAUTICAL MILES  
BEARINGS, TRACKS AND RADIALS ARE MAGNETIC  
ALTITUDES AND ELEVATIONS ARE IN FEET

BRISTOL  
BRI 1C



CHANGE (11/18): RAD FREQUENCY.  
AERO INFO DATE 10 JUL 18

ACC	134.755	LONDON CONTROL
APP	125.650*	BRISTOL RADAR
TWR	133.850	BRISTOL TOWER
RAD	136.080*	BRISTOL DIRECTOR

\*As directed by ATC

TRANSITION ALTITUDE	6000
AREA MSL ALT (x100)	31

**WARNING**  
For Minimum Descent Rate requirements  
See ENR 1.1.3.2.

**WARNING**  
Do not proceed beyond NDB(L) BRI  
without ATC clearance.

**DESCENT PLANNING -  
ATC REQUIREMENTS**  
When determining top of descent point,  
pilots should anticipate possible descent  
to the levels shown in the table below.  
Pilots unable to comply must notify ATC  
as soon as possible.  
**ACTUAL DESCENT CLEARANCE WILL  
BE AS DIRECTED BY ATC.**

- BRI 1C Arrival via L9 to CPT VOR continue on CPT VOR R:275 to POMAX then turn left onto NDB(L) BRI ODM 251° to NDB(L) BRI. FL220 level by CPT VOR.
- GENERAL INFORMATION  
1 Standard Routes may be varied at the discretion of ATC.  
2 Cross SLPs or 3 minutes before holding fix at 250KI/AS or less.